



Computer Training Facilities
Conference/Seminar Facilities
Product Launches /functions
Video Conferencing Facilities



The International Visualisation Centre

When the International Visualisation Centre (IVC) discovered a 19th century church beneath the aging plaster of its premises in the heart of Adelaide's media precinct, they made it a focal point for their extensive training facilities. Exposed stonework combines with state-of-the-art audiovisual equipment to present Adelaide's most innovative training and function centre.

After 12 years' delivering advanced 3D animation and visualisation training and production in Australia and overseas, the IVC team had its own wish list for the perfect training facility. The custom designed centre has been designed from the ground up to make it easy to "plug and play" your presentations in the format of your choice, all in a harmonious atmosphere conducive to productivity and learning.

Here is a place where imaginations take flight, the ideal backdrop for you to communicate your ideas in the most efficient and effective way possible. Come and see for yourself – call us to arrange a tour.



19 Young Street (CBD)
Adelaide SA 5000
Telephone 1300 555 345

www.theivc.com.au
info@theivc.com.au

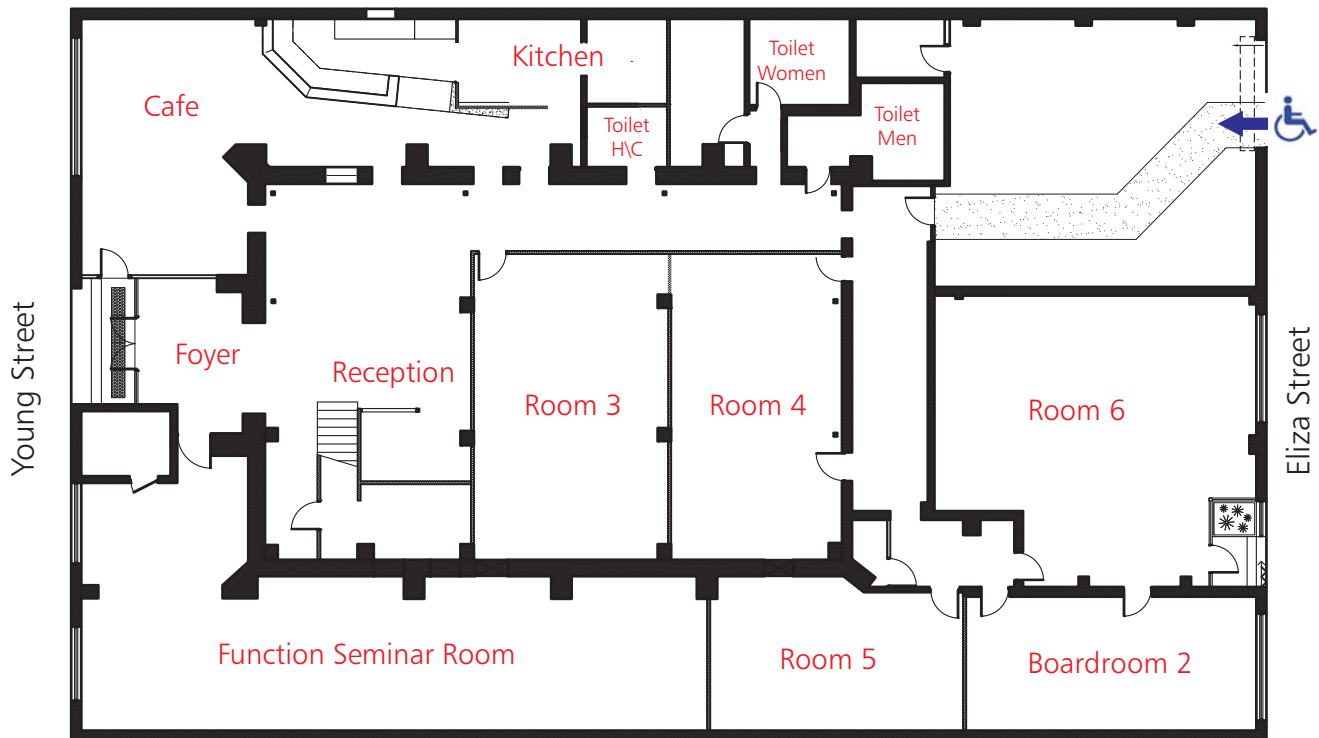
Rooms and Room Capacities

Room	Room Size (LxW)	Room Size (M2)	COMPUTER TRAINING FACILITIES		CONFERENCE\SEMINAR FACILITIES					
			Computer Training	PC Room Combined	Theatre	Theatre Combined	Classroom	Pod	U-Shape	Boardroom style
1	6.5m x 6.4m	42	16	32	50	110	16	12	12	
2	6.5m x 6.4m	42	16		50		16	12	12	
Board Room1	7.1m x 3.4m	24								12
3	9.1m x 4.8m	53	20		62		20	18	22	
4	9.1m x 5.1m	45	16		56		16	18	22	
5	7.5m x 4.6m	33	11				11	12	14	
6	9.6m x 8m	74	30		80		30	36	24	
Function Room	19m x 4.6m	100	24		120		24	NS	NS	44
Board Room2	8.5 x 4.1m	35								16



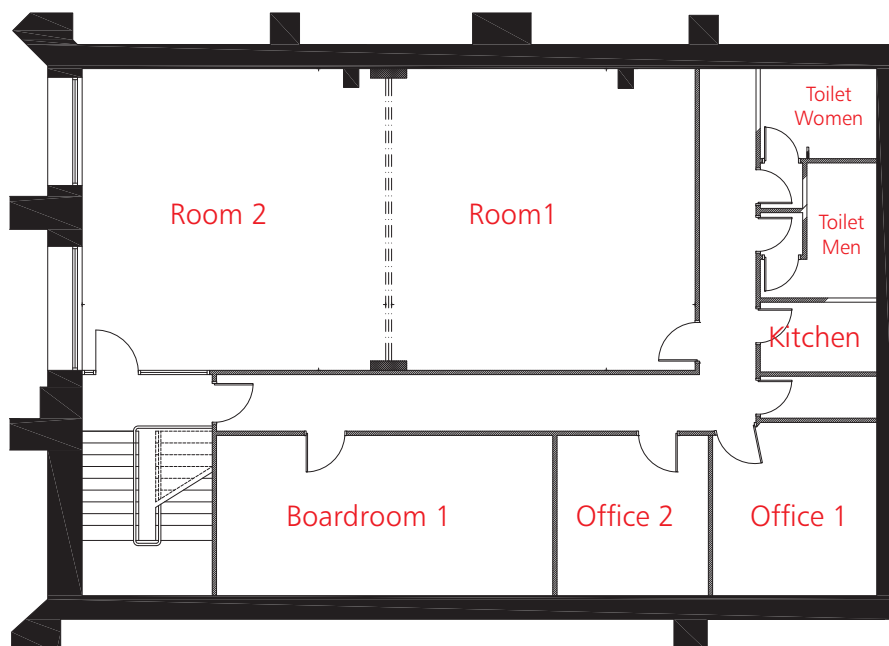
Floorplan and Room Numbers

Training Rooms Floorplan - Ground Floor



Please note: Handicapped access is from Eliza Street.

Training Rooms Floorplan - 1st Floor



Location

Situated in the heart of Adelaide's CBD.



★ Training Facility Hire
19 Young Street

A Accommodation
F Food Courts

Tram Stop
T Taxi Rank

P Parking
△ Parking Entry

100 m
200 ft

Accommodation

Distance and times based on walking. Please use times and prices as guide only.

- A1 Rendezvous Allegra Hotel**
55 Waymouth St
Tel: 61 8 8115 8888
www.rendezvoushotels.com.au
Distance: 180m, 2 Min
- A2 Franklin Street Apartments**
36 Franklin Street, Adelaide SA 5000
(Corner of Franklin and Bentham Streets-
entrance is on Bentham Street)
www.franklinapartments.com.au
Reservations 1300 66 22 88
Distance: 175m, 2 Min
- A3 Medina Grand Adelaide Treasury**
2 Flinders Street, Adelaide SA 5000
Phone: +61 8 8112 0000
www.medina.com.au
Distance: 400m, 4 Min
- A4 Hilton Adelaide hotel**
233 Victoria Square
Tel: +61 8 8217-2000
www.hilton.com
Distance: 570m, 6 Min
- A5 Holiday Inn Adelaide**
65 Hindley Street
(08) 8231 5552
www.HolidayInn.com.au
Distance: 650m, 8 Min
- A6 Radisson Playford**
120 North Terrace
(08) 8213 8888
Distance: 780m, 10 Min
- A7 Oaks Horizons**
104 North Terrace
1300 721 916
www.theoaksgroup.com.au
Distance: 980m, 12 Min
- A8 Stamford Plaza Adelaide**
150 North Terrace
1300 301 391
www.stamford.com.au
Distance: 860m, 9 Min
- A9 Hyatt Regency**
North Terrace
(08) 8231 1234
http://www.hyatt.com
Distance: 920m, 10 Min

Food Courts

- F1 Adelaide Central market & China Town**
128 King William St, (accessible from both Gouger and Grote Streets)
http://www.adelaidecentralmarket.com.au/
Distance: 360m, 4 Min
- Trading Hours
Sun - Closed
Mon - Closed
Tue - 7am to 5.30pm
Wed - 9am to 5.30pm
Thu - 9am to 5.30pm
Fri - 7am to 9pm
Sat - 7am to 3pm
- F2 ANZ Building - Café Precinct**
11 Waymouth Street
Distance: 300m, 5 Min
- Trading Hours
Mon to Fri - 7am to 5.00pm
Sat & Sun - Closed
- F3 City Cross Arcade**
32 Grenfell St
Distance: 680m, 11 Min
- Trading Hours
Mon to Thu - 8am to 5.00pm
Fri - 8am to 9.00pm
Sat - 9.00am to 5pm
Sun - 11am to 5.00pm
- F4 Southern Cross Arcade.**
52-62 King William Street
Distance: 180m, 2 Min
- Trading Hours
Mon to Thu - 9am to 5.30pm
Fri - 9am to 7.00pm
Sat - 10am to 4pm
Sun - 10am to 4pm

Useful Phone Numbers

Taxi Services

Approximately A\$18 one way to the city.
Independent 13 2211
Suburban 13 1008
Yellow Cabs 13 2227
Aged and Disabled Taxi Service - Access Cabs 1300 360 940

Transport Services

Skylink Airport Shuttle (08) 8413 6196 - \$8 one way, City to Airport
Adelaide Metro (Public transport in Adelaide) (08) 8303 0822
Adelaide Metro's Jetbus operate services to Adelaide city and the North Eastern suburbs with connections to other services.
Fares start at A\$3.50 one way.

Domestic Airlines

Qantas 13 13 13
Jetstar 13 15 38
Virgin Blue 13 67 89
Tiger (03) 9335 3033

Emergency 000
Police Assistance 131 444

Parking

Distance and times based on walking. Please use times and prices as guide only as they can change at the discretion of the owners at any time.

P1 CArE Park - Young Street

15 young Street
Times: 24 hours\7 days

Daily Parking Charge: Mon - Fri \$11
between 6am - 11.59pm
after 4pm til 11.59pm is \$6
Sat & Sun \$6
Hourly parking: No

Notes: Ground and 2nd floor reserved, parking on daily basis only on level 1. COINS ONLY so please have them handy as there is no attendant.
Distance: directly across the street

P2 Corner Young & Franklin Streets

Daily Parking Charge: \$9 for 12 hours.

Hourly parking: \$3 per hour
Ticket machine

Distance: 75m, 1min
Notes: COINS ONLY so please have them handy as there is no attendant.

P3 CArE Park - Franklin Street

81 Franklin Street
Type: Ground Floor, old building
Times: Mon to Thursday 7am - 8pm
Fri - 7am -10.30pm

Daily Parking Charge: \$9 after 4pm \$5
Hourly rate: No
Distance: 84m, 1 Min

P4 CArE Park - Pitt Street

15 Pitt Street
Type: Undercover 6 floor Multi-story
Times: Mon to Thurs 6am - 8pm
Fri: 6am - 10.30pm
Sat: 6.30am - 5.30pm
Sunday: Closed

Daily Parking Charge: \$11 Mon - Fri, Sat \$4
In by 10am out between 1 & 8pm

Hourly parking: Per Hourly rate or part there of \$3
Max charge \$17
Distance: 370m, 4 Min

P5 CArE Park - Little Weymouth

102 Weymouth Street
Type: Partly under cover and partly open air lot.
Times: 24 Hours
Ticket machine

Daily Parking Charge: Mon - Fri \$11
after 4pm \$5
Sat & Sun \$5

6am - 11.59pm for daily parking
after 4pm til 11.59pm is \$5
Hourly parking: No
Distance: 100m, 1 Min

P6 CArE Park - Henry Weymouth

100 Weymouth st
Type: 8 floor Multi-story
Times: Mon to Fri 7am - 7.30pm

Daily Parking Charge: \$12
in by 9.30am out by 3-7pm

Hourly parking: hourly rat is \$3.50 for first hour or part there of
\$16 for up to 5th hour or part there of
\$19 max charge
Distance: 100m, 1 Min

P7 U-Park - Topham

52-54 Weymouth Street
Type: Multi-storeyType:
Times: Mon - Fri 7.00am -12 midnight
Saturday 8.00am - 12 midnight

Daily Parking Charge: \$13 Monday - Friday
Enter before 8.30am and exit before 7.00pm. Pre pay before 8.45am and exit up until midnight for no extra charge.

Sat - 0-1 hour	\$1.90
1-2 hours	\$3.70
Over 2 hours	\$5.40

Night charges:
Monday - Friday 0-1 hour \$1.30
1-2 hours \$2.40
Over 2 hours \$3.70
Distance: 280m, 3.5 Min

P8 U-Park - Grote Street

Type: Multi -storey
Times: Monday -Sat 6.30am - 12midnight
Sun 10.00am - 10.00pm

Daily park rate: \$9.50 Mon to Fri
Enter before 8:30am and exit before 7pm.

Hourly rate: \$2.20 per hour or part there of
over 6 hours is \$16.50
Distance: 400m, 4Mins